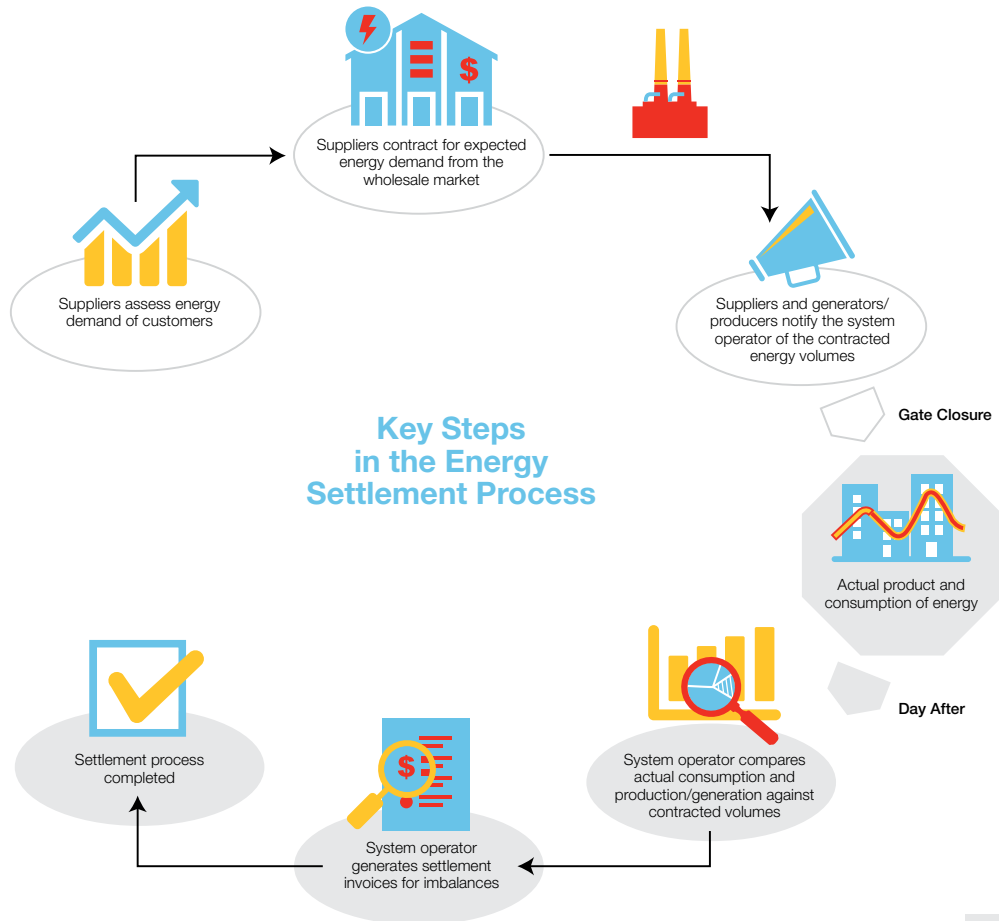


The background of the entire page is a photograph of a business meeting. Several people in business attire are gathered around a table. In the foreground, a person's hand is pointing at a tablet computer. The tablet screen displays various data visualizations, including a network diagram with colorful nodes, a bar chart, and a line graph. Other hands are visible, some pointing towards the tablet, suggesting a collaborative discussion. The lighting is bright and professional, typical of an office environment.

IEE Settlements



Role of IEE:

Source: *How Energy Settlements Work*, Published on 12/1/2015, Featured in: Oil & Energy. Author: Diptarka Sensama

Most utilities deal with Independent System Operators (ISO) or Regional Transmission Organizations (RTO) as part of their market settlement and market rules. In many cases, each ISO/RTO has slightly different market rules as it pertains to the settlement process in their individual market. Utilities that cross ISO/RTO boundaries often deal with creating a different settlement process for each ISO/RTO that they deal with.

The IEE Settlements module provides a more complete and simple way to manage settlement data for either a single ISO, multiple ISOs or even RTOs. The module ensures that the data provided to the ISO/RTO is consistent, conforms to utility business rules and is completely validated, tracked and versioned. The IEE Settlements module provides a single database for critical settlement usage

data used. Using the module alleviates editing and synchronization across multiple databases as well as manual adjustments.

Employing IEE MDM as the basis for settlement allows you to collect data from multiple head end systems. This eliminates manual consolidation work, import and reformatting of data, and other activities that can introduce errors into the settlement data set. Reducing handoffs is key to reducing lost data and corrupted data sets. The IEE Settlements module modernizes manual processes, reduces the cost of settlement and reduces process time to provide timely data to the ISO/RTO.

IEE MDM, coupled with the Settlements module, is the quickest, simplest way to update your settlement processes at a fraction of the cost of managing and maintaining separate settlement systems.



Join us in creating a more **resourceful world**.
To learn more visit **itron.com**

While Itron strives to make the content of its marketing materials as timely and accurate as possible, Itron makes no claims, promises, or guarantees about the accuracy, completeness, or adequacy of, and expressly disclaims liability for errors and omissions in, such materials. No warranty of any kind, implied, expressed, or statutory, including but not limited to the warranties of non-infringement of third party rights, title, merchantability, and fitness for a particular purpose, is given with respect to the content of these marketing materials. © Copyright 2020 Itron. All rights reserved. 101805BR-02 11/20

CORPORATE HQ

2111 North Molter Road
Liberty Lake, WA 99019 USA

Phone: 1.800.635.5461

Fax: 1.509.891.3355